

ICBBI-42SD/S



## FEATURES

- Dual refrigeration keeps food fresher longer

---

- Air purification system fights spoilage, odours

---

- Microprocessor control assures peak performance

---

- Crispers and deli drawers in low-temp, high-humidity zones for optimum freshness

---

- Freshness cards for maximum food preservation

---

- Magnetic door seal system locks in cold air

---

- Automatic ice maker with "max ice" feature

---

- Adjustable shelves for maximum convenience

---

- Water-filtration system reduces contaminants, chlorine taste and odor

## ACCESSORIES

- Air Purification Cartridge

---

- Egg Container

---

- Stainless steel kickplate

---

- Grilles for 2108 mm or 2235 mm finished height (2134 mm is standard)

---

- Side panel mounting kit

Accessories are available through an authorized dealer.  
For local dealer information, visit [subzero-wolf.com/locator](http://subzero-wolf.com/locator).



## HANDLE OPTIONS

PRO



TUBULAR



## PRODUCT DETAILS

### REFRIGERATOR

- 4 Adjustable glass shelves
- 1 High-humidity drawer with divider
- 2 Storage drawers with divider
- 3 Adjustable door shelves
- 2 Stationary door shelves
- Adjustable dairy compartment
- Air purification system

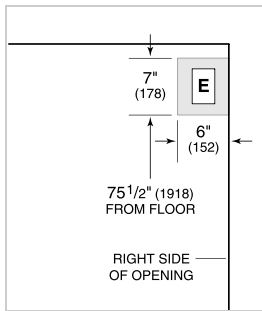
### FREEZER

- Automatic ice maker with dispenser
- 3 Adjustable wire shelves
- 2 Adjustable wire shelves
- 3 Storage drawers
- 5 Adjustable door shelves
- Water filtration system

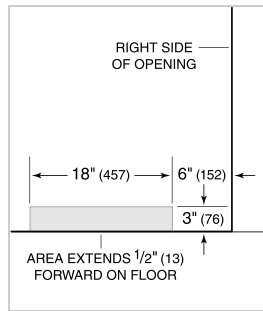
**PRODUCT SPECIFICATIONS**

Model	ICBBI-42SD/S
Dimensions	1067mmW x 2134mmH x 610mmD
Door Clearance	668mm
Weight	276 kg
Refrigerator Gross Capacity	427 L
Freezer Gross Capacity	225 L
Electrical Supply	220-240 VAC; 50/60 Hz
Electrical Service	≤ 4 A
Receptacle	3-prong grounding-type

**ELECTRICAL**



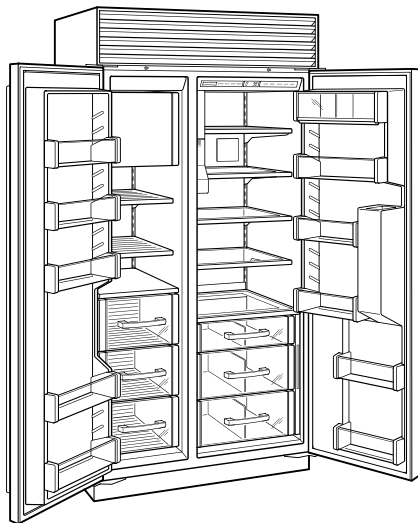
**PLUMBING**



**PANEL SPECIFICATIONS** For complete panels specifications including width/height, weight requirements, thickness requirements and offset details visit [subzero-wolf.com/builtinconfigurator](http://subzero-wolf.com/builtinconfigurator).

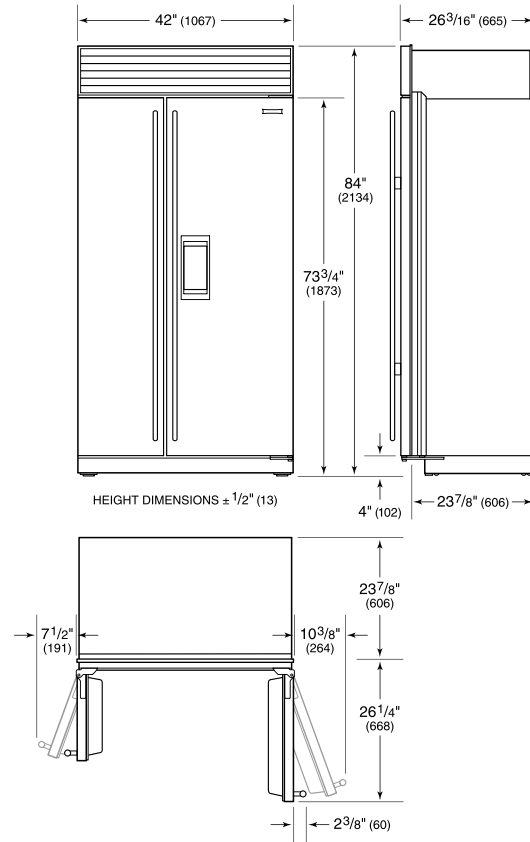
**NOTE:** Dimensions in parenthesis are in millimeters unless otherwise specified

**INTERIOR VIEW**

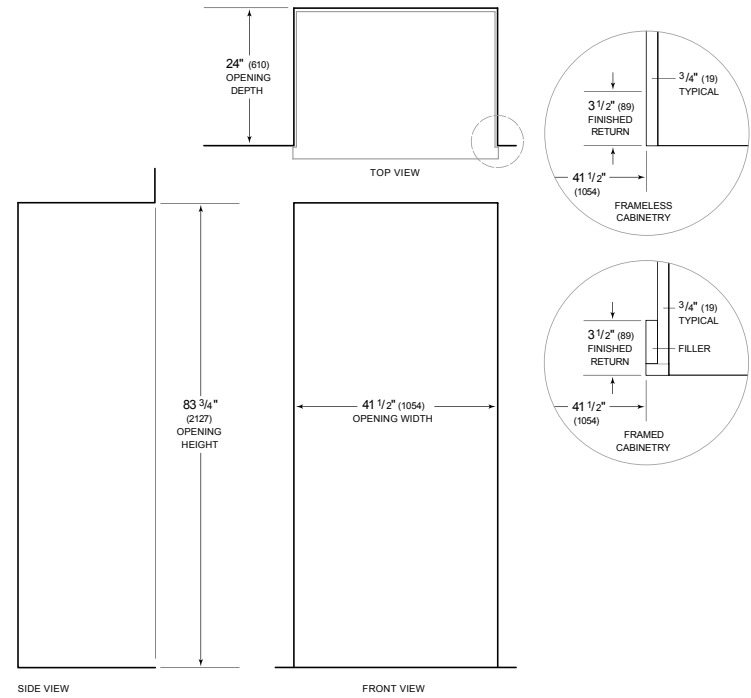


This illustration is intended for interior reference only and may not represent the exterior of the model being specified.

**DIMENSIONS**



**STANDARD INSTALLATION**



**NOTE:** 3 1/2" (89) finished returns will be visible and should be finished to match cabinetry. Shaded line represents profile of unit.