

ICBBI-42UFDID/S



FEATURES

- Dual refrigeration keeps food fresher longer
- Air purification system fights spoilage, odours
- Microprocessor control assures peak performance
- Crispers and deli drawers in low-temp, high-humidity zones for optimum freshness
- Over-and-under refrigerator/freezer storage
- Freshness cards for maximum food preservation
- Magnetic door seal system locks in cold air
- Automatic ice maker with "max ice" feature
- Adjustable shelves for maximum convenience
- Soft-close deli drawer for meats, cheeses and more
- Discreet interior water dispense with advanced filtration
- Maximum capacity in a 107 cm French door model
- Two-column shelving for customized storage

ACCESSORIES

- Air Purification Cartridge
- Egg Container
- Stainless steel kickplate
- Grilles for 2108 mm or 2235 mm finished height (2134 mm is standard)
- Side panel mounting kit

Accessories are available through an authorized dealer.
For local dealer information, visit subzero-wolf.com/locator.



HANDLE OPTIONS

PRO



TUBULAR



PRODUCT DETAILS

REFRIGERATOR

- Internal water dispenser
- 6 Adjustable glass shelves
- 1 High-humidity drawer with dividers
- 2 Storage drawers
- 4 Adjustable door shelves
- 2 Stationary door shelves
- 2 Adjustable dairy compartments
- Air purification system

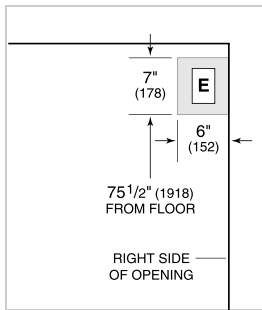
FREEZER

- Automatic ice maker
- Full extension drawer with 2-tier wire baskets
- Water filtration system

PRODUCT SPECIFICATIONS

Model	ICBBI-42UFDID/S
Dimensions	1067mmW x 2134mmH x 610mmD
Weight	264 kg
Refrigerator Gross Capacity	514 L
Freezer Gross Capacity	179 L
Electrical Supply	220-240 VAC; 50/60 Hz
Electrical Service	≤ 4 A
Receptacle	3-prong grounding-type

ELECTRICAL



PLUMBING



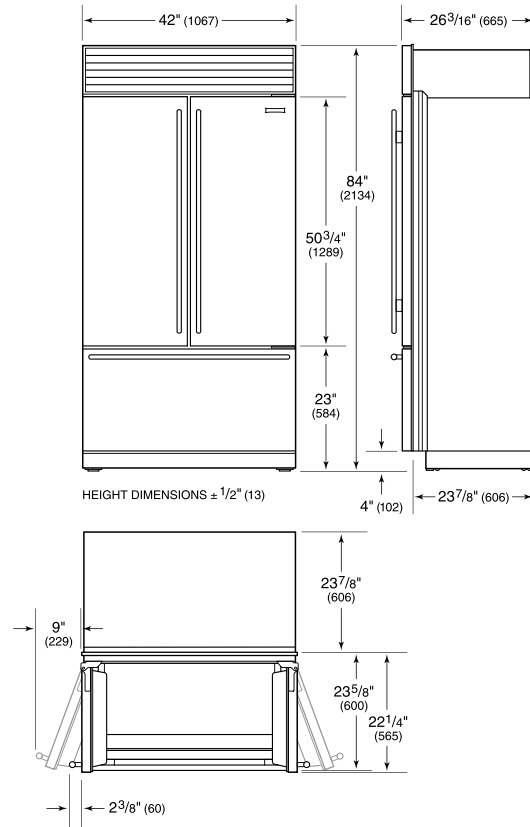
NOTE: Dimensions in parenthesis are in millimeters unless otherwise specified

INTERIOR VIEW

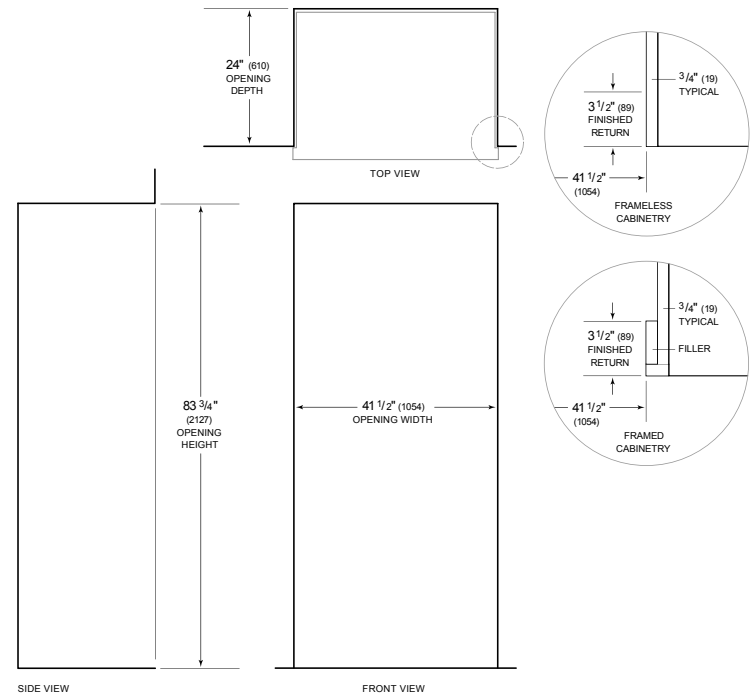


This illustration is intended for interior reference only and may not represent the exterior of the model being specified.

DIMENSIONS



STANDARD INSTALLATION



NOTE: 3 1/2" (89) finished returns will be visible and should be finished to match cabinetry. Shaded line represents profile of unit.