

ICBSO3050PM/S/P



FEATURES

Preheats faster and cooks more consistently across all racks due to its advanced Dual VertiFlow™ convection system

Assures predictably delicious results with 10 microwave power levels, convenient quick-start modes, and an intuitive Gourmet mode

Prepares 50 popular dishes with the Gourmet feature that automatically adjusts cook times and temperatures

Handles multiple dishes simultaneously with our largest capacity oven (13 percent larger)

The temperature probe alerts you when your dish has reached the desired temperature

Uncomplicate cooking with innovative, interactive colour touchscreen controls

Choose knobs in iconic red, black, brushed stainless, brushed brass, or brushed gray

Integrates beautifully into surrounding cabinetry with flush installation

Ensures excellent visibility via three bright halogen lights and large, triple-panel-glass door windows

Master your technique with tips and recipes from the Mastering the M Series Oven guide

ACCESSORIES

76 CM M Series Professional Built-In Oven Black Knob Kit

76 CM M Series Professional Built-In Oven Brushed Brass Knob Kit

76 CM M Series Professional Built-In Oven Brushed Gray Knob Kit

76 CM M Series Professional Built-In Oven Brushed Stainless Knob Kit

76 CM M Series Professional Built-In Oven Red Knob Kit

76 cm Full-Extension Ball-Bearing Oven Rack

76 cm Grill Pan

76 cm Standard Oven Rack

Dehydration Kit

Temperature Probe

Red, black, brushed stainless, brushed brass, and brushed gray knob kits

Accessories available through an authorized dealer.
For local dealer information, visit subzero-wolf.com/locator.



KNOB OPTIONS

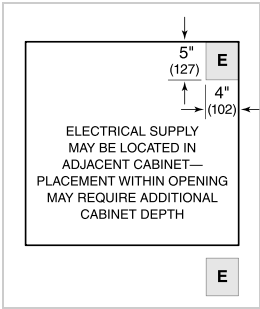




PRODUCT SPECIFICATIONS

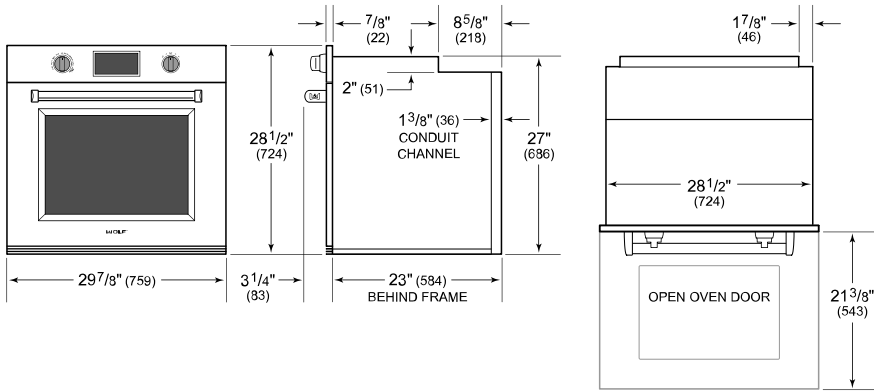
Model	ICBSO3050PM/S/P
Dimensions	759mmW x 724mmH x 584mmD
Oven 1 Interior Dimensions	641mmW x 448mmH x 506mmD
Overall Capacity	144 L
Usable Capacity	125 L
Door Clearance	543mm
Weight	124 kg
Electrical Supply	240/208 VAC, 60 Hz
Electrical Service	4.2-4.8 kW

ELECTRICAL

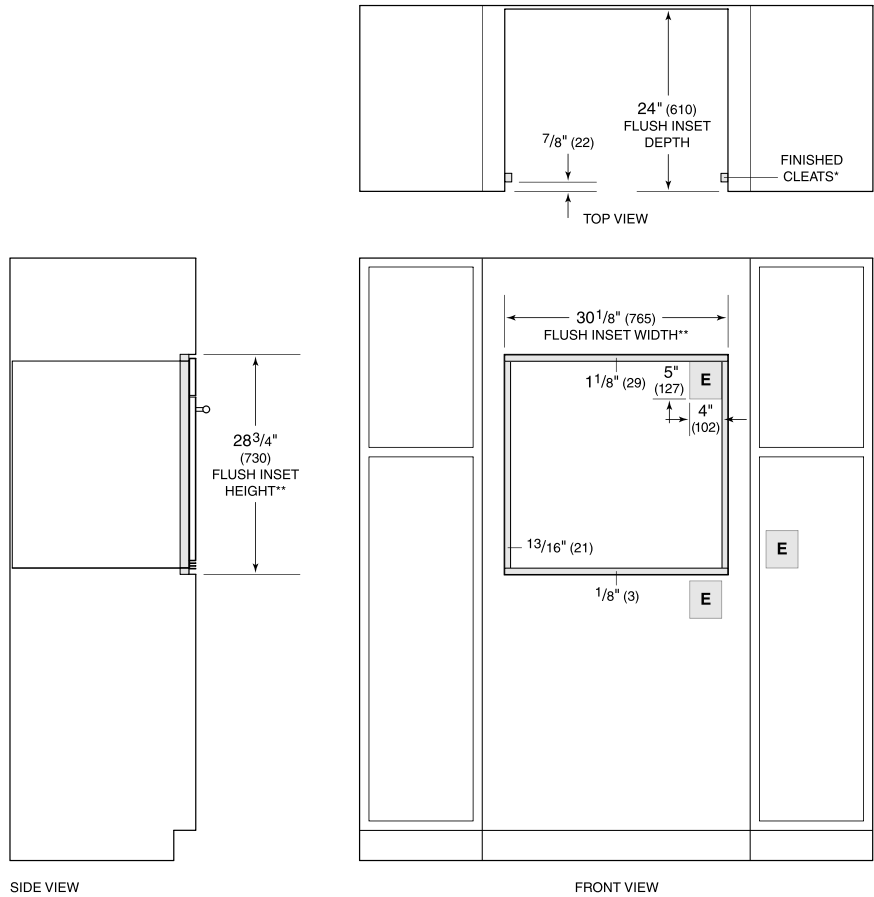


NOTE: Dimensions in parenthesis are in millimeters unless otherwise specified

DIMENSIONS



FLUSH INSTALLATION



*1" (25) minimum depth. Shaded areas will be visible and should be finished to match cabinetry.
**Dimension provides minimum reveals.
NOTE: Location of electrical supply within opening may require additional cabinet depth.