

**ICBDD30****FEATURES**

Heavy-gauge stainless steel

---

Lowers when not in use

---

Adjustable discharge lets you negotiate around ducting

---

Delay-off feature

---

Delay-off feature shuts off blower after approximately 5 minutes

---

Reversible motor box can be installed on either side of the downdraft

---

Blower required (internal blower available)

---

Remote control operation from up to 3 m away

---

Rises 356 mm to whisk away smoke and odours

---

Rigorously tested for decades of use

---

Exceptional support from our Customer Care team

**ACCESSORIES**

Trim kit for installation with sealed burner rangetop

---

Make-up air damper

Accessories available through an authorized dealer.

For local dealer information, visit [subzero-wolf.com/locator](http://subzero-wolf.com/locator).

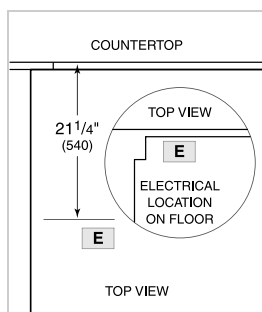
**BLOWER OPTIONS**

- 900 CMH Internal Blower

**PRODUCT SPECIFICATIONS**

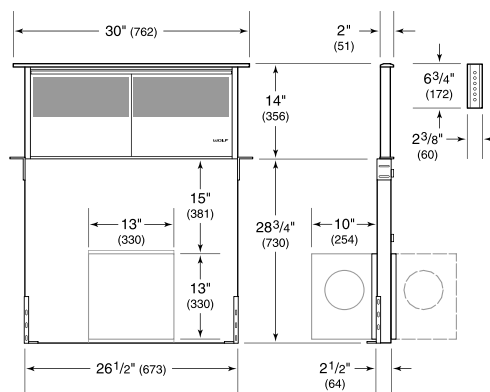
Model	ICBDD30
Dimensions	762mmW x 356mmH x 51mmD
Weight	34 kg
Electrical Supply	220-240 VAC; 50/60 Hz
Electrical Service	≤ 6 A
Discharge Location	Vertical or Horizontal
Discharge Dimensions	150 mm round internal or 250 mm round remote
Receptacle	3-prong grounding-type

**ELECTRICAL**



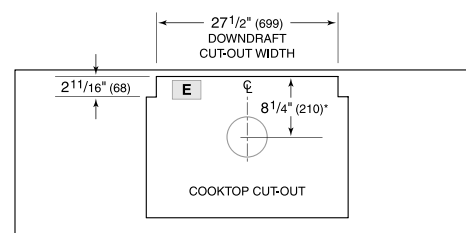
**NOTE:** Dimensions in parenthesis are in millimeters unless otherwise specified

**DIMENSIONS**

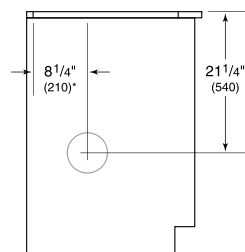


**NOTE:** Shown with front mounted internal blower with 6" (152) round discharge, dashed line represents rear mount.

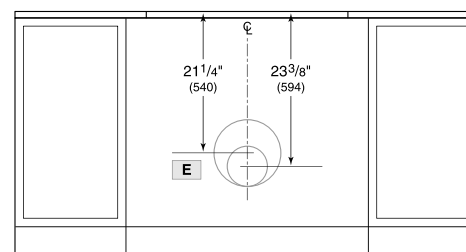
**STANDARD INSTALLATION**



TOP VIEW



SIDE VIEW



FRONT VIEW

\*6" (152) back from countertop cut-out when internal blower is rear mounted.

**NOTE:** Internal blower 6" (152) round, side, rear or bottom discharge. In-line and remote blower 10" (254) round, rear discharge. Centerline indicates center of downdraft cut-out.